

Flower Petal Gift Basket

Turn a laundry basket into a basket for gifts!

Materials:



Plastic basket or other container • One sheet of dark pink Smart-Fab to cover the outside of the basket according to dimensions below • One sheet of yellow Smart-Fab to create petal lining (you can use any two contrasting colors of Smart- Fab)
• Additional sheet of Smart-Fab the same color as the petal lining • Scissors, pinking shears (you can choose whichever one you like) • Double-sided adhesive tape
• Glue • Stapler • **Half-circle pattern** (click on the link to print the pattern) • Measuring tape • Marker

Preparation:

Measuring and cutting Smart-Fab.

1. Dark pink Smart-Fab for the outside of the basket.

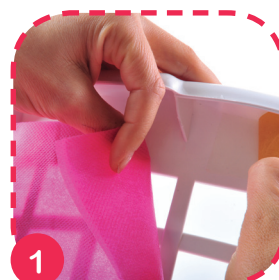
- Height-Turn the basket over and measure from the middle of the bottom of the basket to below the rim.
- Circumference- Leave enough fabric to include a two inch overlap in the measurement. If the basket is sloped, measure it at its broadest point (the length is measured from the open end of the basket to the middle of the bottom).
- Cut fabric to match measurements.

2. Yellow Smart-Fab for the petal lining.

- Depth inside basket- double the measurement that you got for the height of the outside of the basket.
- Circumference- measure one and one half times the circumference.
- Cut fabric to match measurements.
- Print half circle pattern.

3. Yellow Smart-Fab for ribbon to tie around basket.

Measure and cut a piece of Smart-Fab that is one and one half times the circumference of the basket by at least one and one half inches thick. (the thickness can be changed).



Procedure:

Outside of the basket

Attach pieces of double-sided adhesive tape six inches apart around the upper edge of the basket.



Remove the backing from the double-sided adhesive tape to prepare it for attaching the Smart-Fab.



Cut the rounded end of the fabric only.



Attach the pre cut piece of dark pink Smart-Fab to the upper part of the outside of the basket using the double-sided adhesive tape. Continue this way around the upper part of the basket until it is covered. Use overlapping fabric to secure closing with double-sided adhesive tape.



Open fabric. Pinch every second fold and staple two thirds of the way down from rounded end.



Turn the basket upside down. Hold the unattached ends of the Smart-Fab and attach them to the base of the basket so that they enclose the entire exterior of the basket. Fold fabric in any way that works for your basket or container and glue down or secure with double-sided adhesive tape.



Fit the yellow petal lining inside the basket and fold the rounded edges of the petals over the rim, so that about 7 inches remain on the outside of the basket. Glue the edges of the Smart-Fab to one another to close the circle.



“Petal Lining” for Inside of the Basket



Decorations

Wrap pre-cut yellow Smart-Fab around the basket and tie a bow. Trim off extra Smart-Fab if it is longer than the basket.



To create the petal lining fold the pre-cut yellow Smart-Fab in half lengthwise three times. Each time making a crease in the fabric.



Use our half circle pattern or you can create your own stencil as shown in the picture. Trace on top of folded fabric at one edge to create the petals of the flower.

That's it!

You can now fill your Smart-Fab gift basket.

